



# Intelligent IP Network PA System Control Broadcast Server M-9200

## User Manual



Thank you for choosing LYINTL public address system products.  
Please read this manual carefully before using the devices.

## Before using the device

1. Ensure that the on-site power outlet or relay is functioning normally, that the installed cabinet is grounded, and that the voltage is stable.
2. Connect the power cord to the three-prong interface at the rear of the chassis. The device is factory-set to start automatically when powered on. If it does not start automatically, press the power button on the front panel.
3. Enter the main interface. The system is shipped as a clean version. The device is third-party software such as decompression tools require you to install them yourself or request installation during ordering. Please note whether your control software requires the installation of corresponding plugins or driver updates beforehand.
4. This unit is equipped with two operation methods: an integrated retractable keyboard and mouse or touchscreen operation;
5. To display the virtual keyboard on the desktop: Right-click on the taskbar at the bottom of the desktop and select "Show Touch Keyboard Button."

Note: Please shut down and restart the machine once a week or once a month. Due to continuous operation, redundant files or memory overflow may occur, which may affect the machine's operating speed or cause lag.

---

## Index

1, Product Specifications .....	P1
2, Product Pictures .....	P2
3, M-9200 Digital IP Network Public Address System Server Configuration Quick Guide.....	P3
1) How to Setup Server IP address .....	P3
2) How to Modify IP Addresses of Amplifiers, Network Microphones and Other Network Terminals.....	P4
3) How to Connect Amplifier and Other Terminals to Broadcast Server.....	P6
4) How to Insert and Play Music Temporarily.....	P8
5) How to Upload Music to Server.....	P10
6) How to Setup Scheduled Playback Tasks.....	P11
7) LAN/Cross-segment System Connection Architecture (Reference).....	P14

---

## Product Specifications

<b>Model number</b>	M-9200	
<b>Panel</b>	High-grade brushed hard anodized aluminum alloy panel	
<b>Chassis structure</b>	Fingerprint-resistant spray-coated electrolytic zinc steel plate	
<b>Front buttons</b>	1*power switch; 1*front one-touch alarm button; 1*MIC; 2*USB2.0	
<b>Keyboard and mouse</b>	Pull-out keyboard + touchpad mouse with left and right buttons	
<b>Optical drive</b>	Built-in ultra-thin DVD drive	
<b>Installation method</b>	Supports rack mounting and desktop placement	
<b>Packaging</b>	Honeycomb box + pearl cotton (optional air box)	
<b>Screen size</b>	17.3"	
<b>Resolution</b>	1920*1080	
<b>Brightness</b>	300cd/m <sup>2</sup>	
<b>Screen ratio</b>	16:9	
<b>Touch screen</b>	<input type="checkbox"/> Capacitive <input type="checkbox"/> Resistive	
<b>PC configuration</b>	<b>Configuration 1</b>	<b>Configuration 2</b>
<b>Motherboard</b>	Industrial grade	Industrial grade
<b>Processor</b>	Intel Core i5 3rd generation	Intel Core i5 6rd generation
<b>Frequency</b>	2.5-3.1 GHz dual-core quad-thread	3.3-3.9 GHz quad-core quad-thread
<b>Memory</b>	8G DDR3L (supports up to 8G)	8G DDR4 (supports up to 64G)
<b>Hard drive</b>	128GB SSD (upgradable)	256GB SSD (upgradable)
<b>I/O interface</b>	2*Gigabit Ethernet ports, 6*USB (including 2 front ports), 2*RS232, 1*VGA, 1*HDMI, 1*1 set of 3.5 audio, 2 sets of 6.35 audio	2 Gigabit Ethernet ports, 4 USB 3.0 ports, 4 USB 2.0 ports (including 2 front-facing ports), 2 serial ports, 1 VGA port, 1 HDMI port, 1 PS/2 port, 1 set of 3.5mm audio jacks, 2 sets of 6.35mm audio jacks
<b>Built-in expansion</b>	1*Mini-PCIE	1*PCIE 3.0*16
<b>Input voltage</b>	120~373V DC, rated 72W	220V ATX, rated 350W

# Product Pictures

Front view (for reference only)



Configuration 1 rear view (for reference only)



Front view (for reference only)



Configuration 2 interface diagram (for reference only)



# M-9200 Digital IP Network Public Address System Server Configuration Quick Guide

## 1, How to Setup Server IP Address

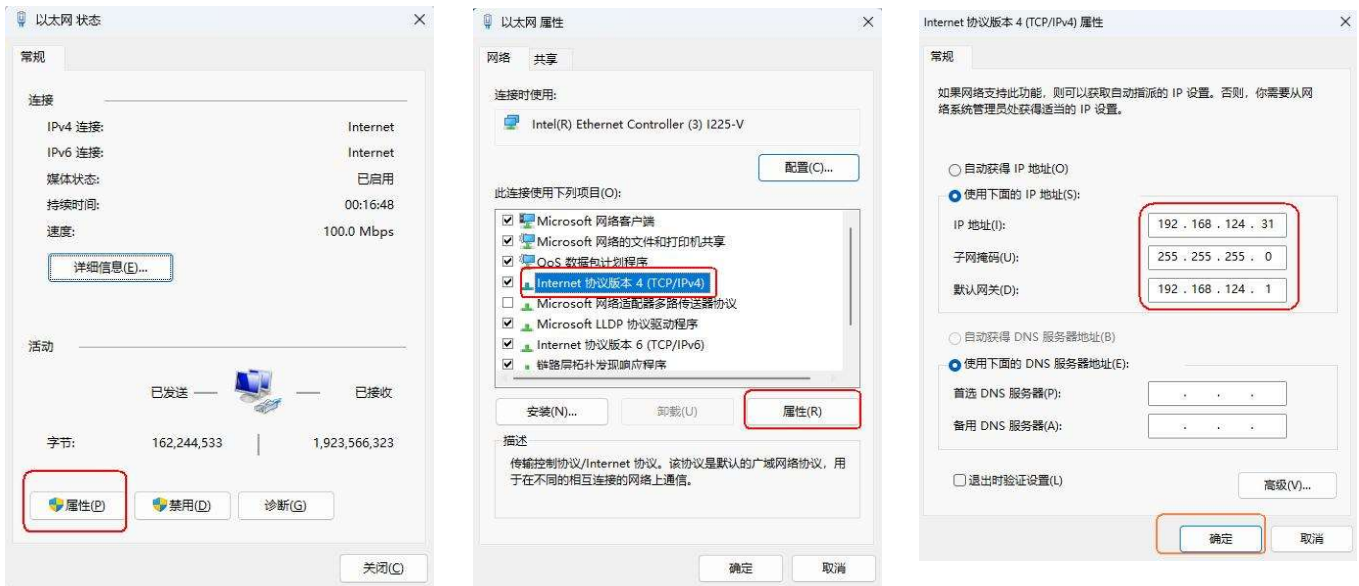
The server refers to the computer where the IP broadcast service software must be installed and operated. A fixed IP address is required for stable operation and control of music broadcasting and other features.

### Steps to set a fixed IP address on Windows 10:

1) Right-click the network icon in the lower right taskbar and select Network and Internet Settings, or search for Control Panel.



2) Find the Network and Sharing Center. Click Ethernet. Click Properties, then go to Internet Protocol Version 4 (TCP/IPv4) Properties.



3) Use the following IP address, and input the following (example):

IP Address: 192.168.124.31

Subnet Mask: 255.255.255.0

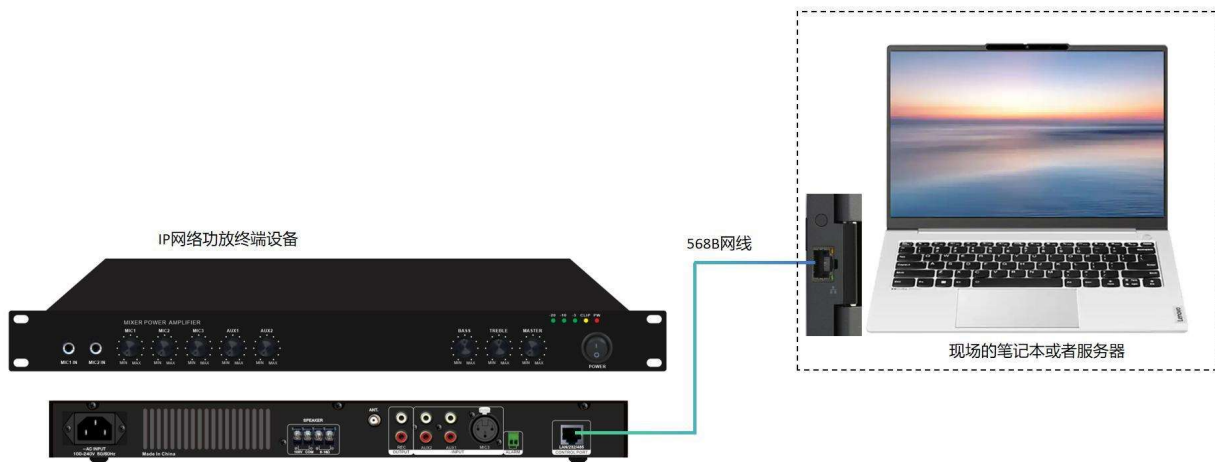
Default Gateway: 192.168.124.1

Double-click the digital IP network broadcast installer and complete the installation. The shortcut Digital IP Network Broadcast Server will appear on the desktop.



## 2, How to Modify IP Addresses of Amplifiers, Network Microphones and Other Network Terminals

1) Connect the network amplifier / paging microphone or other network terminals to the server



2) Open the Digital IP Network Broadcast Terminal Management Client.



3) Use the Search Device function to locate terminal devices.

Change the configuration from DHCP (dynamic IP) to Static IP.

Set the terminal IP in the same LAN as the server:

IP Address: 192.168.124.77 (must be unique)

Subnet Mask: 255.255.255.0

Default Gateway: 192.168.124.1

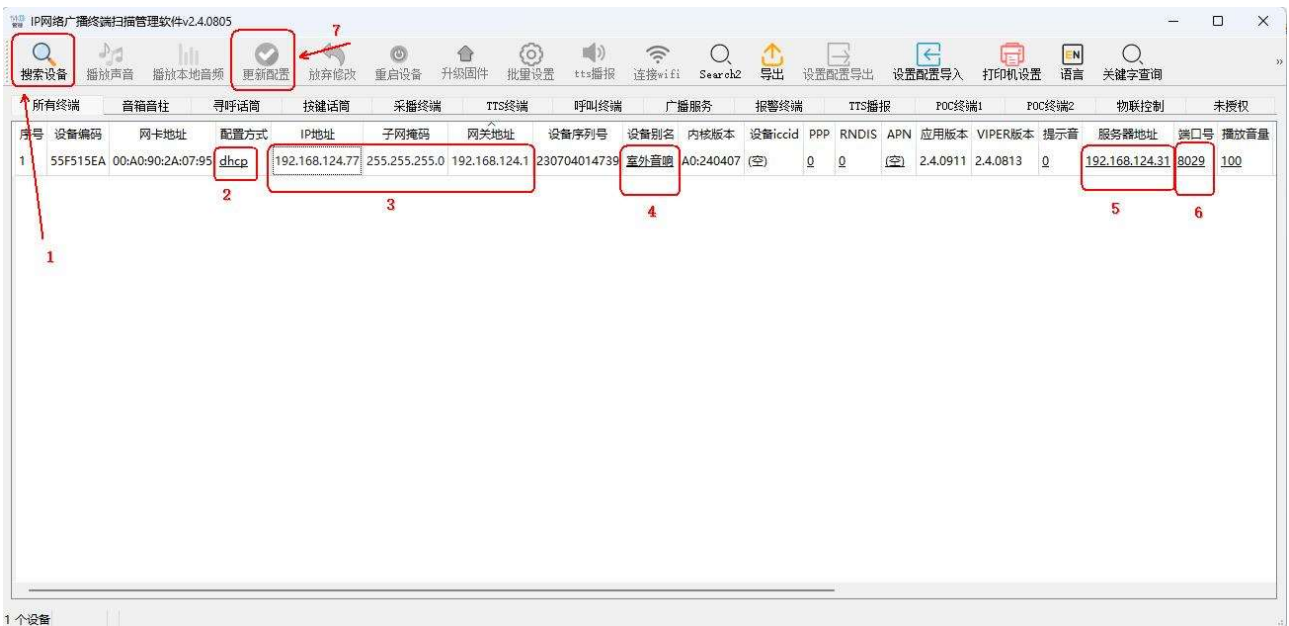
Device Alias: e.g., "Outdoor Speaker"

Server Address: 192.168.124.31 (broadcast server IP)

Port: 8029

Volume: 80

Click Update Configuration after changes.



**Note:**

If you see all zeroes like 0.0.0.0 for IP/Subnet/Gateway/Server Address, do NOT click Update Configuration until proper values are set. Otherwise, the device may become permanently unsearchable.



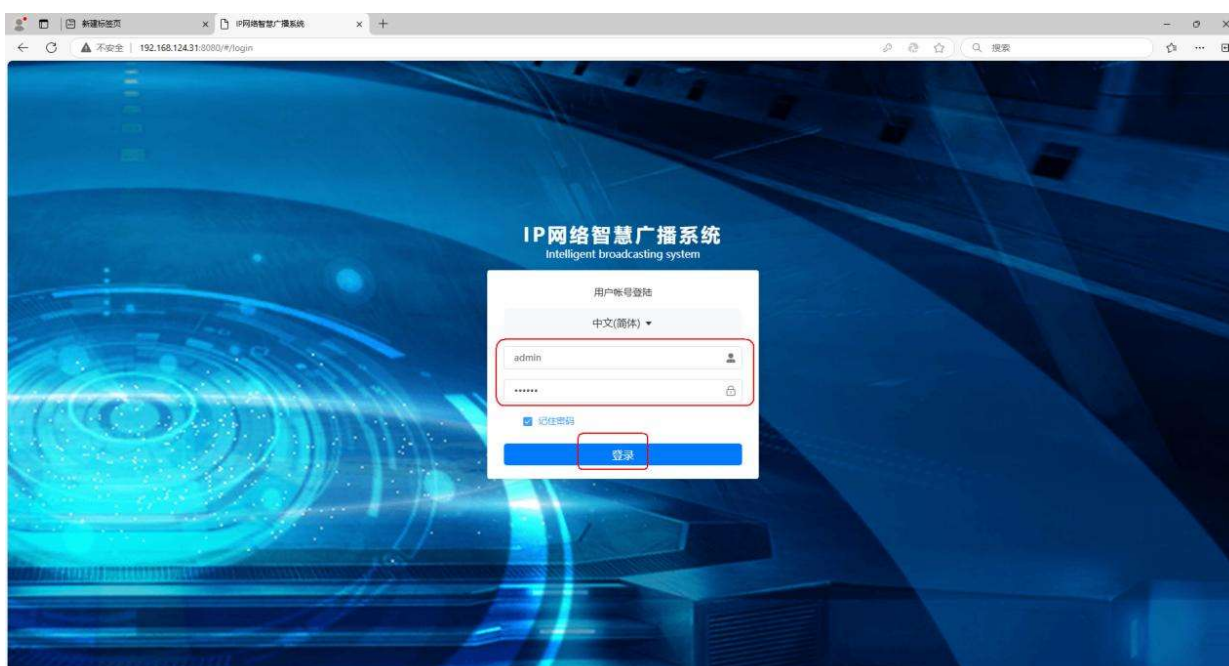
### 3, How to Connect Amplifier and Other Terminals to Broadcast Server

- 1) Double click the shortcut Digital IP Network Broadcast Server icon, you will find the server IP address as below:

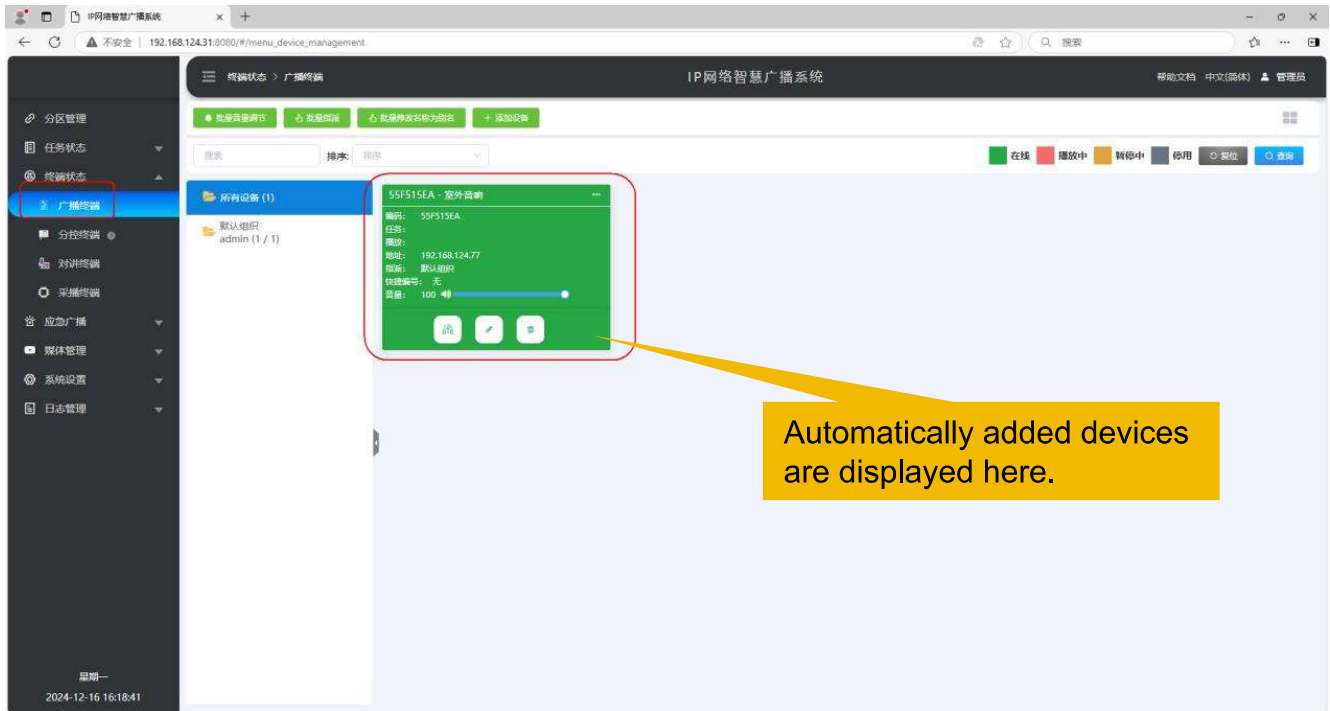


- 2) Open the web browser and input above server IP address, e.g., `http://192.168.124.31:8080`  
Username: admin  
Password: 123456

Click Log in

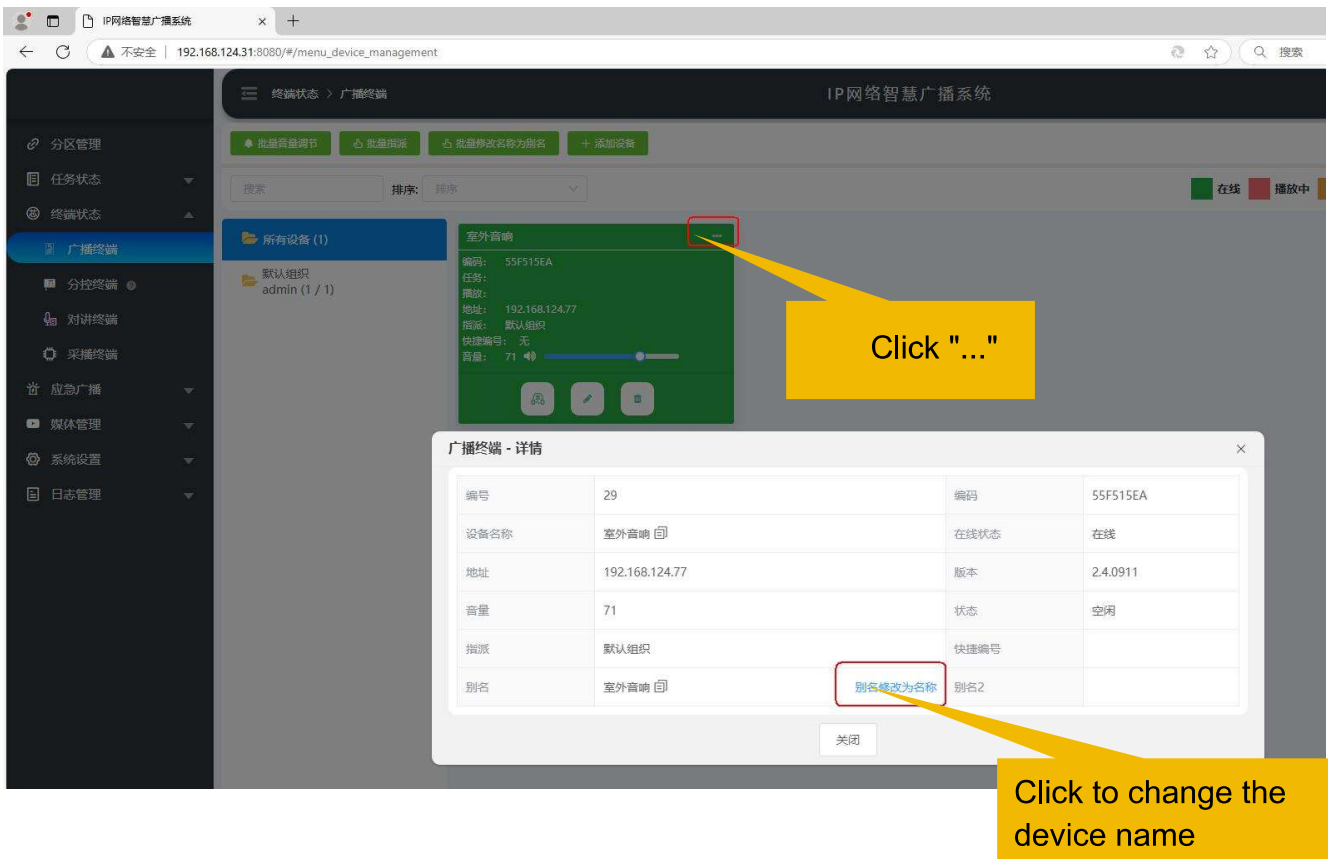


3) Go to Broadcast Terminals under terminal status.  
Online devices will be added automatically.

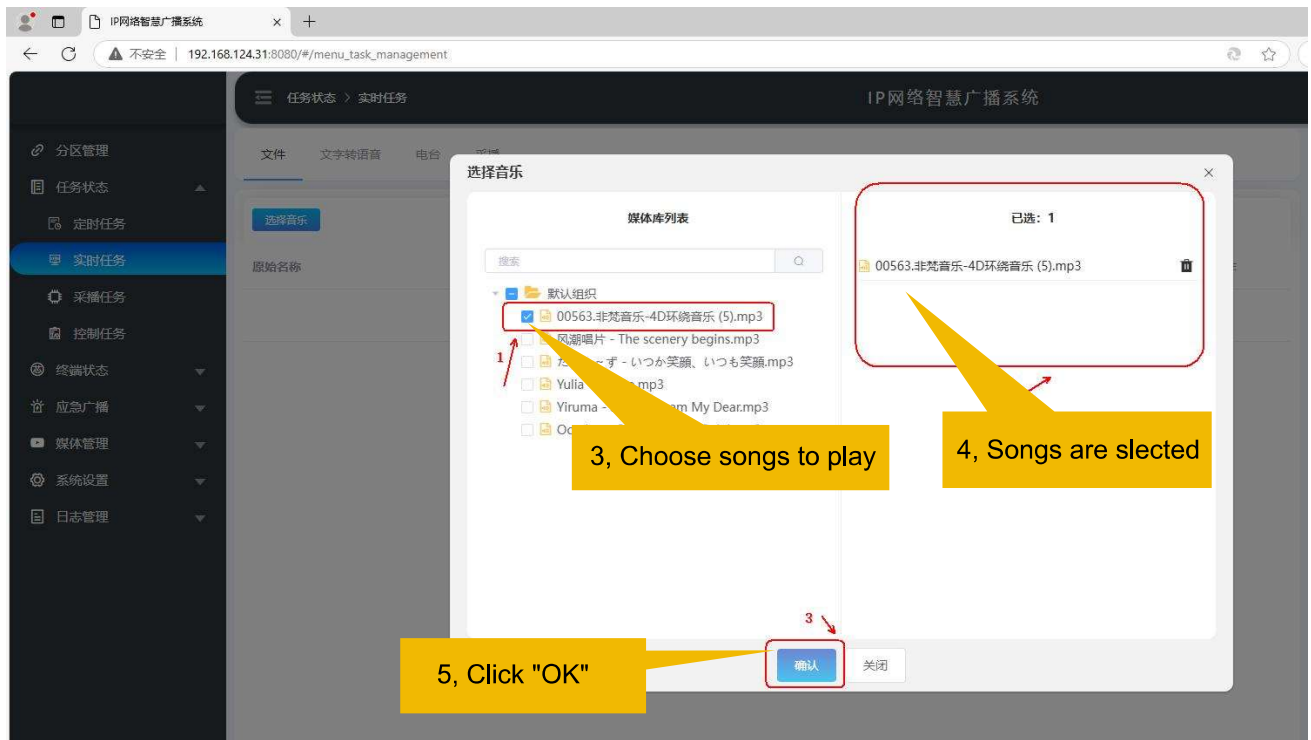
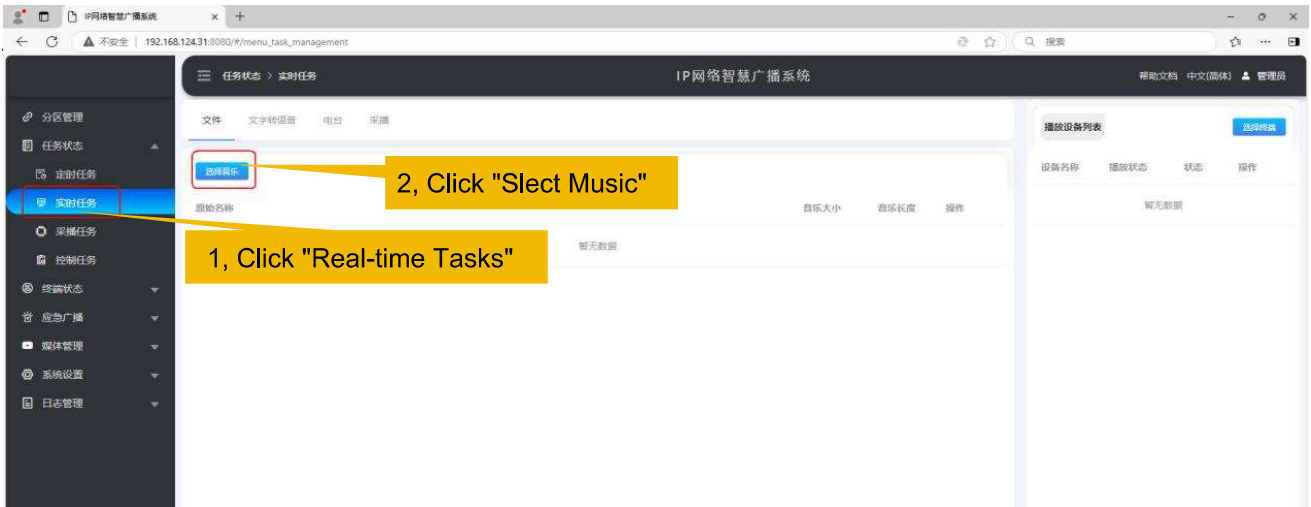


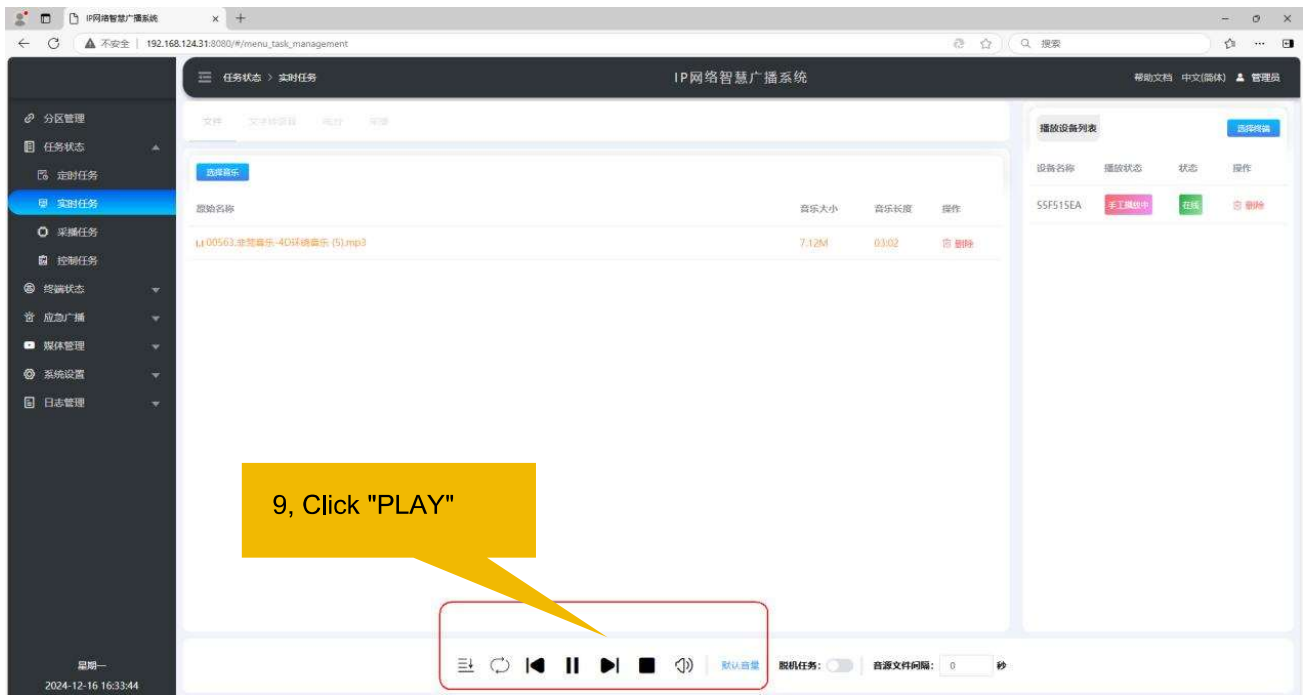
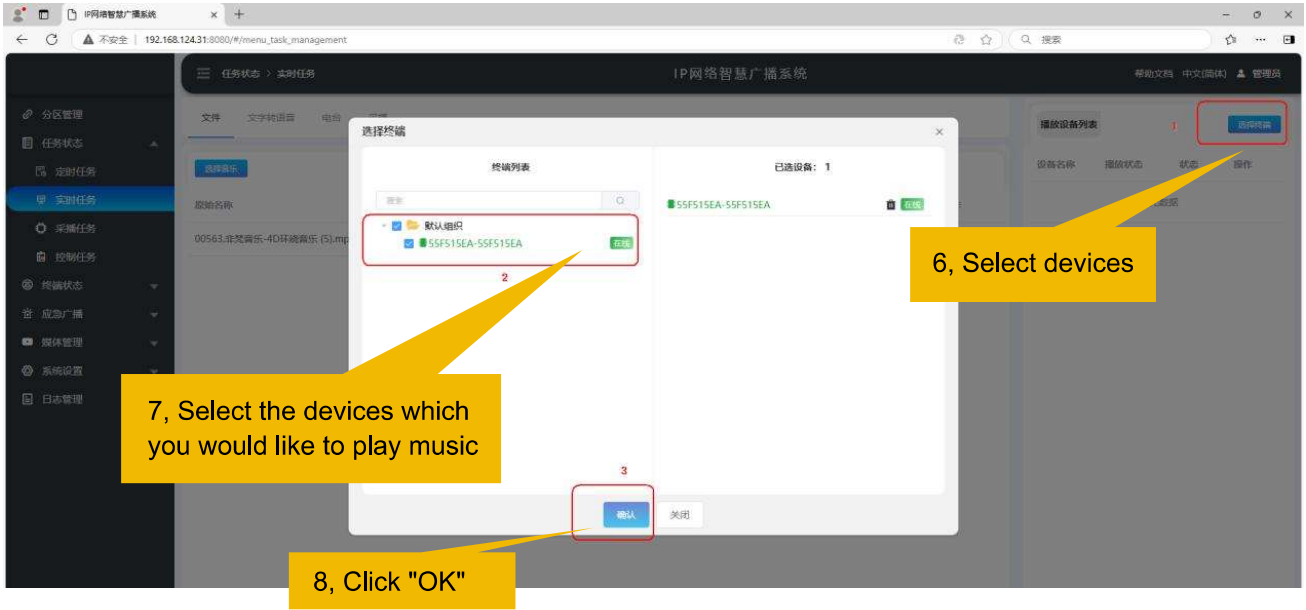
4) Change the new added devices's name.

Click the three dots [...] on the top right of each device, then modify the alias name.

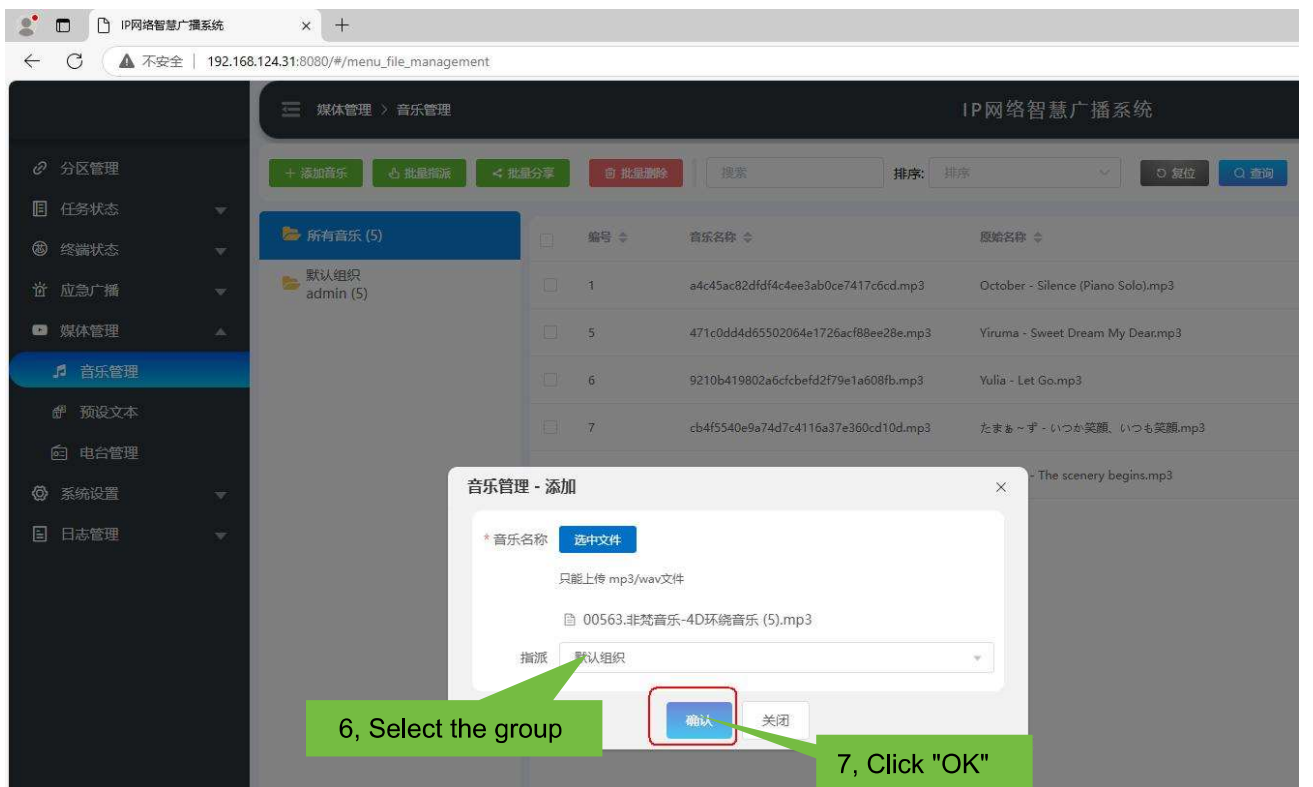
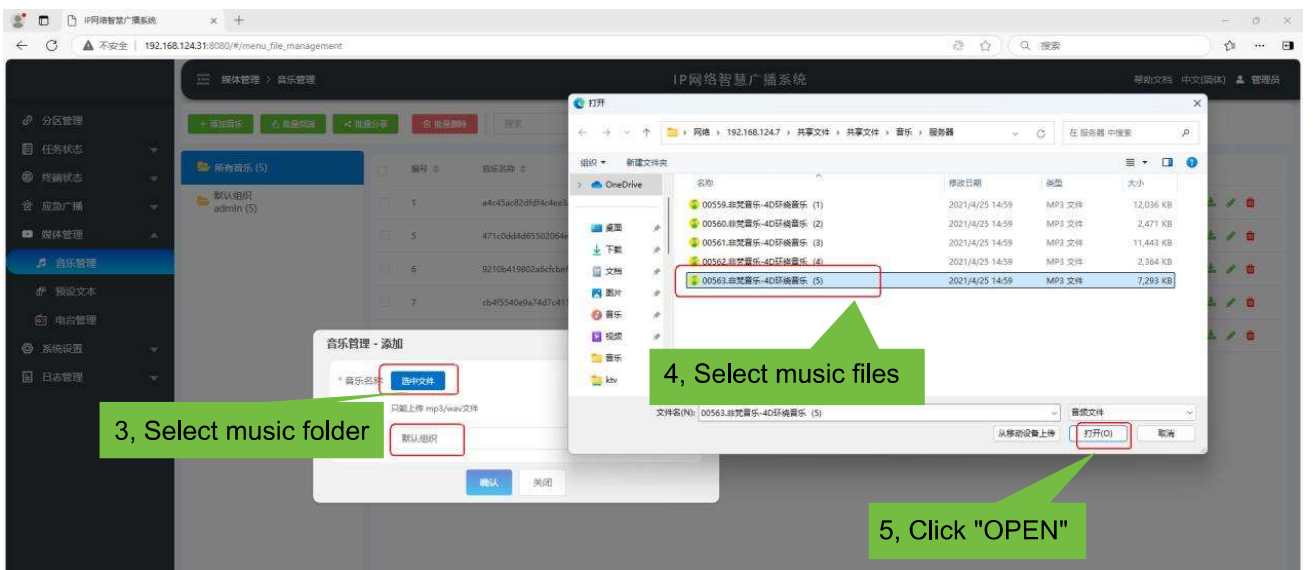
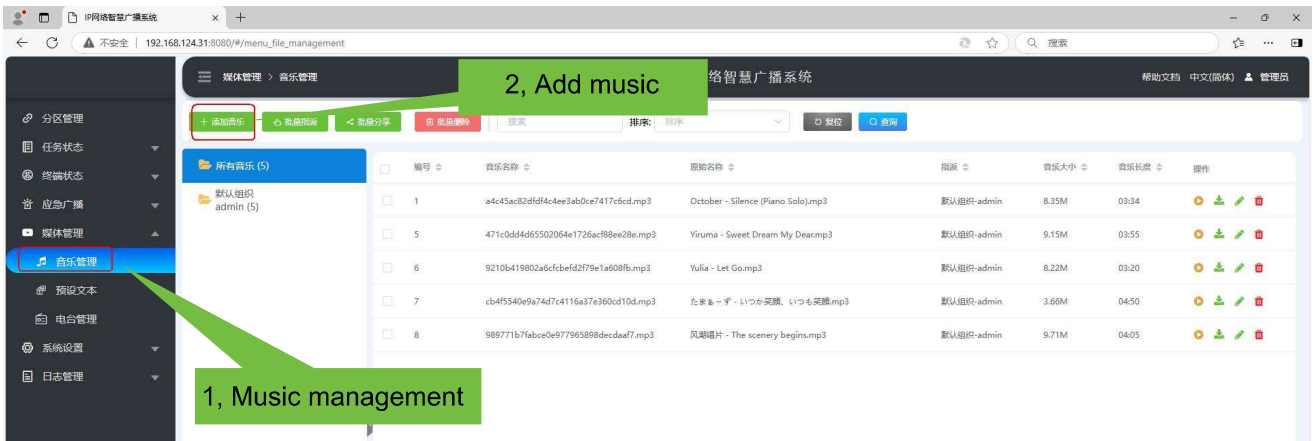


## 4, How to Insert and Play Music Temporarily

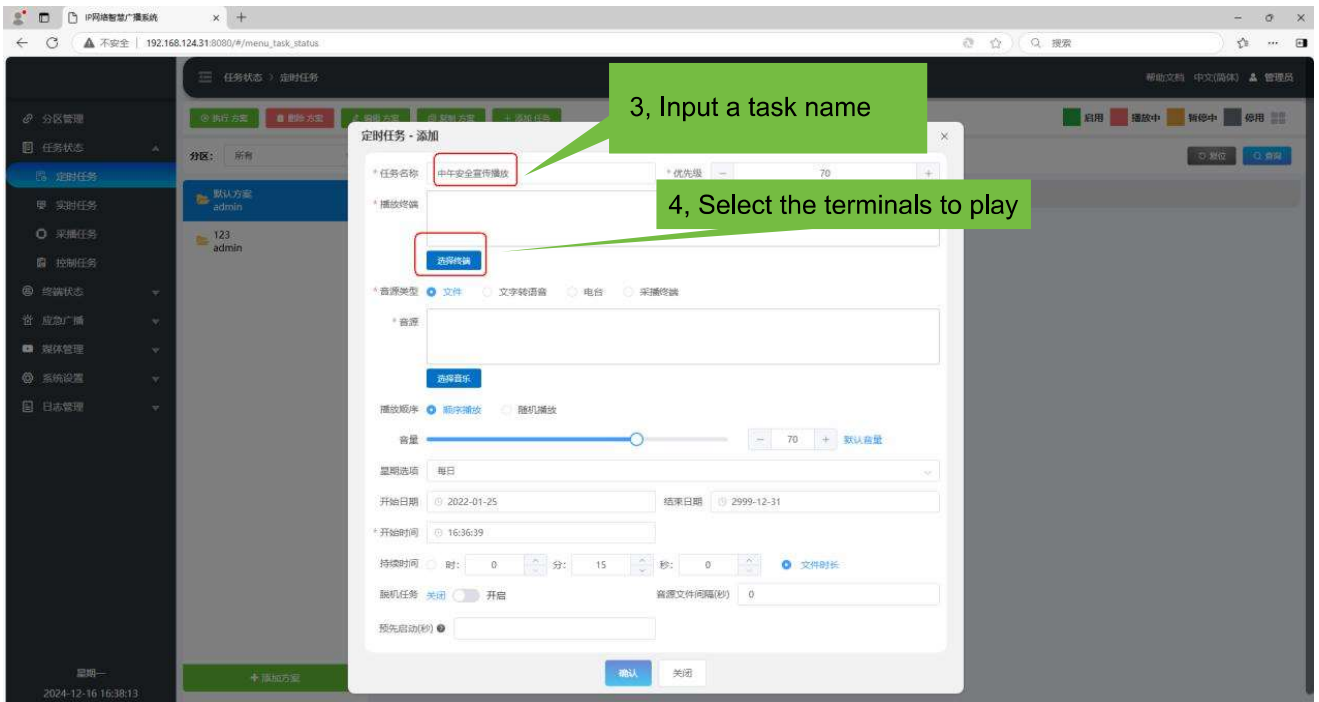
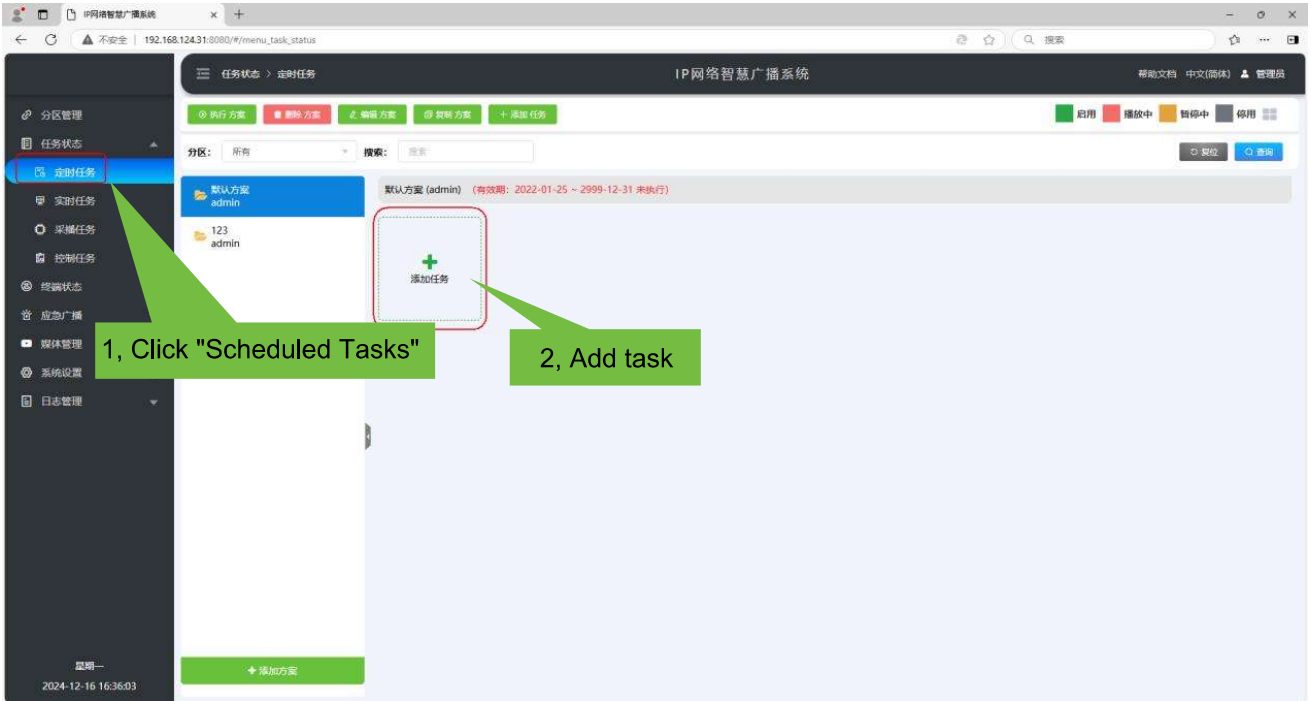


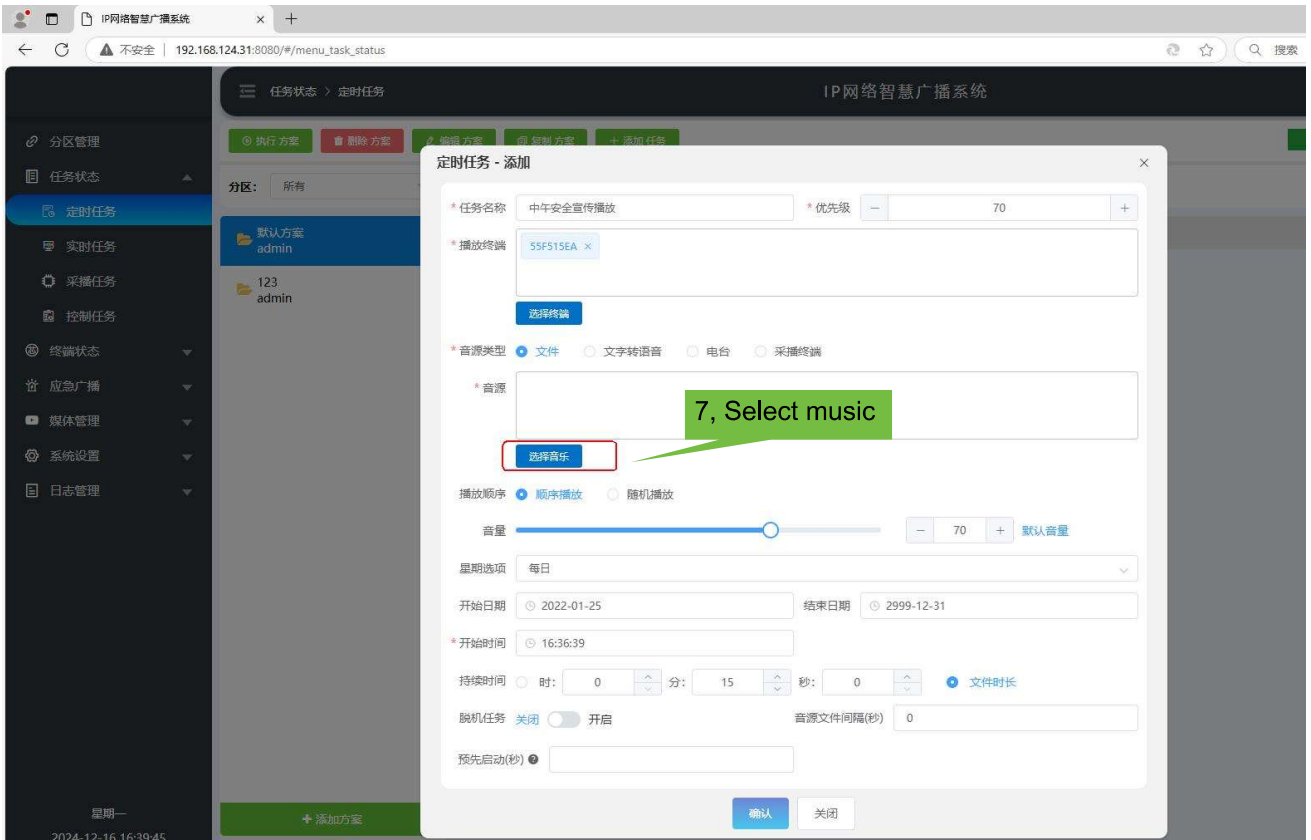
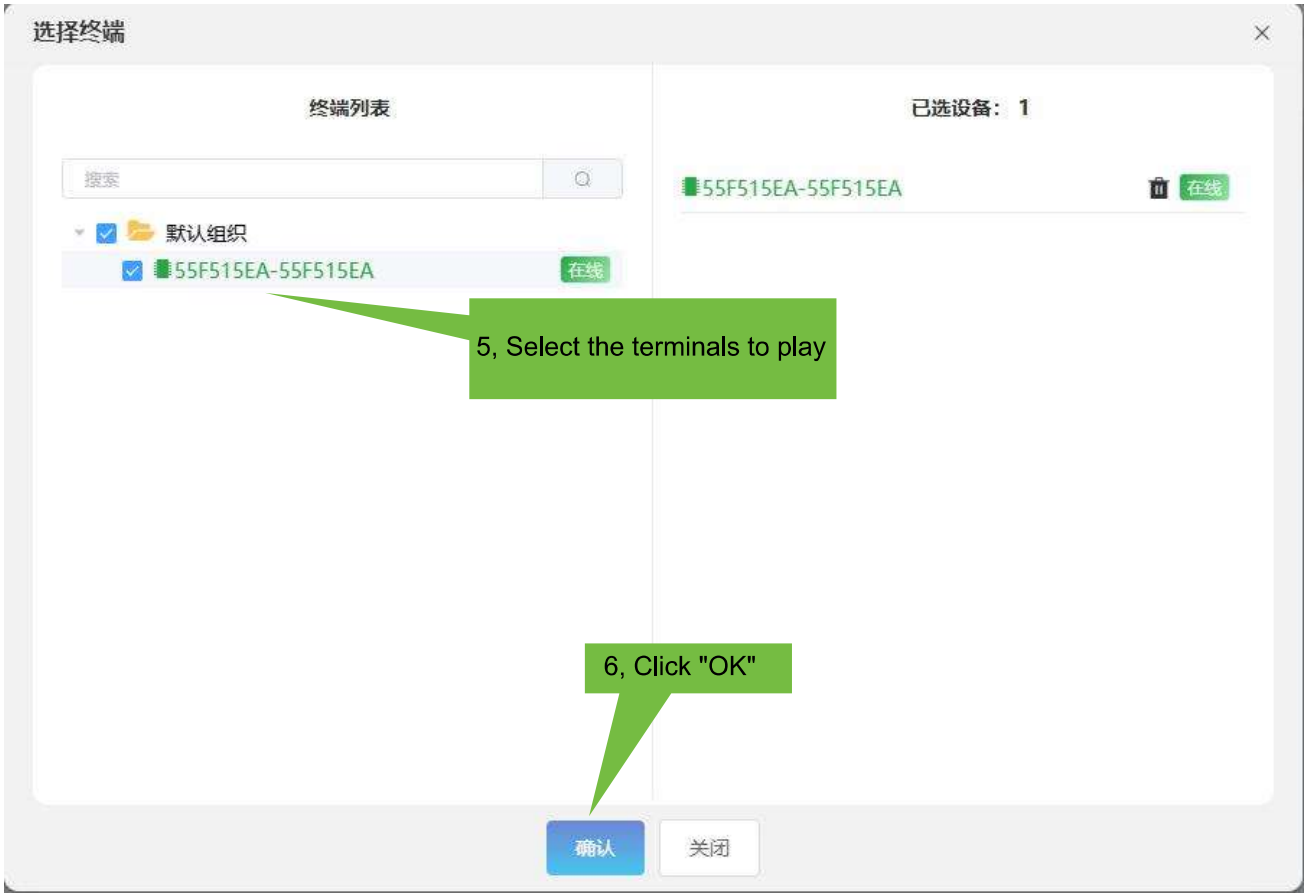


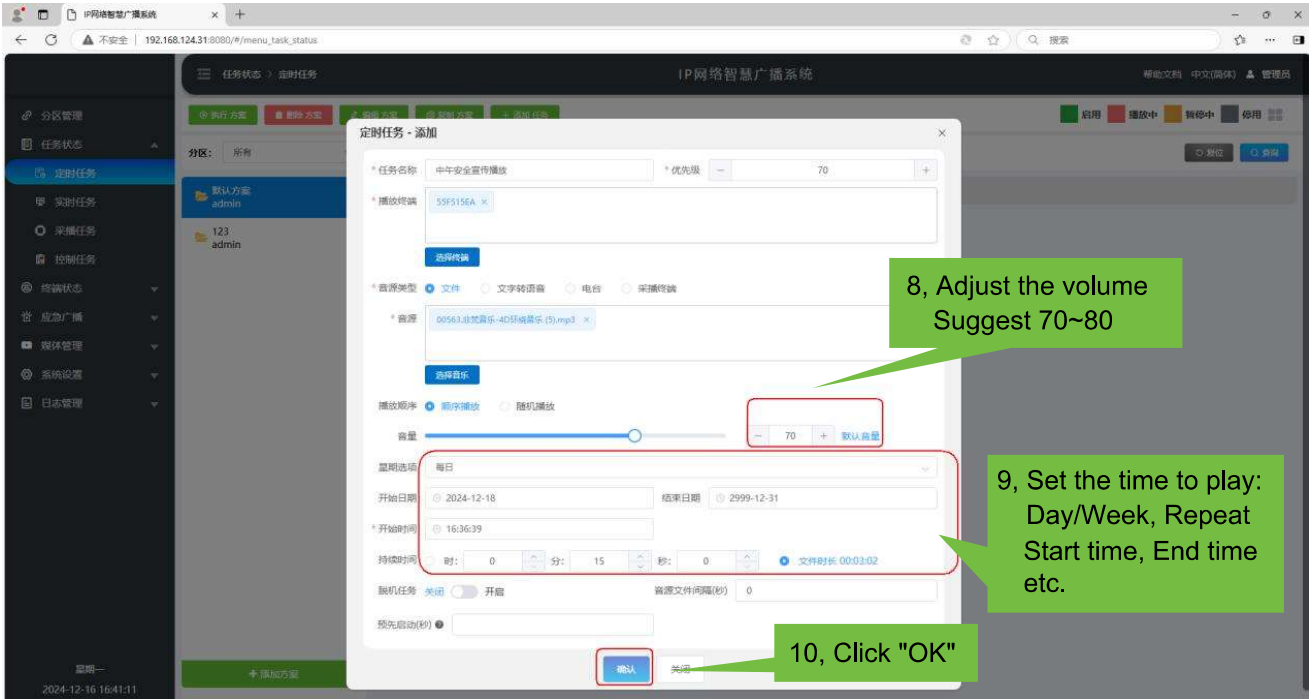
### 5, How to Upload Music to Server



## 6, How to Setup Scheduled Playback Tasks



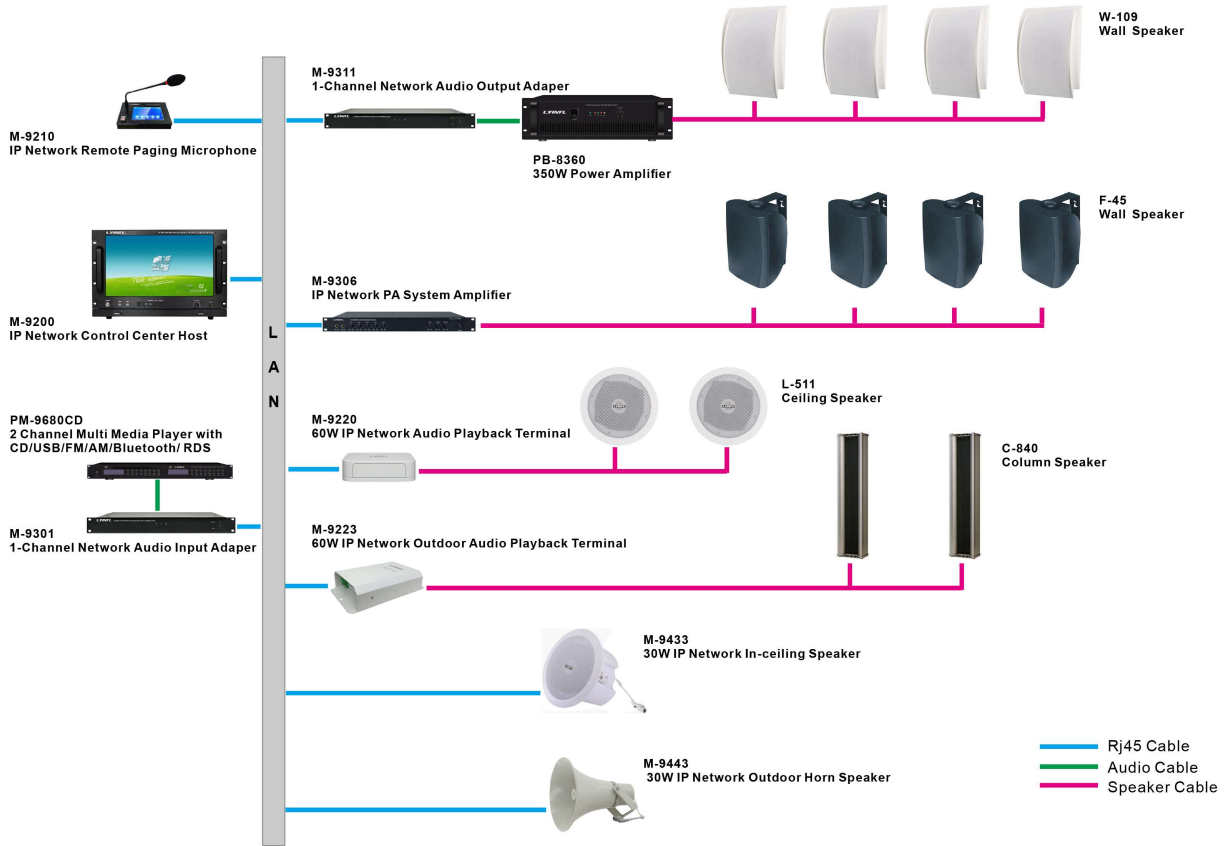






# 7, LAN/Cross-segment System Connection Architecture (Reference)

## M-9200 IP Network PA System Connection Diagram



**Specifications are subject to change without prior notice.**

***LYINTL***

LY International Electronics Co., Ltd.

Addr: Room 1206, Aoyuan Business Building, No. 26 Jinlong Road  
Nansha District, Guangzhou China. 511458

Tel: +86-20-39390663

[Http://www.lyintl.com](http://www.lyintl.com)

Email: [sales@lyintl.com](mailto:sales@lyintl.com)