



Outdoor Network Horn Speaker M-170E

User Manual



About the User Manual

This User Manual is available and effective upon completion of development of the outdoor network horn speaker. The User Manual includes product description, matters needing attentions in use, instructions on system connection, instructions on use of product and technical specifications of the terminal. Please read this User Manual carefully before connection, installation and use and operate in accordance with corresponding instructions in the Manual.



This symbol on the rear panel indicates matters needing attentions, please use or operate the product in accordance with corresponding instructions.

Please keep this User Manual in good custody for future use.

PoE—V1.0

Facture 2020-7-27

CONTENTS

Introduction.....	1
Product Overview.....	1
Product Features.....	1
Product Information.....	2
Side View.....	2
Front View.....	2
Rear View.....	3
Mounting Bracket View.....	3
Connection and Installation.....	4
Connection Diagram.....	4
Installation Instruction.....	4
System Connection Diagram.....	5
Connection Diagram.....	6
Terminal Function Table.....	6
Operating Instructions on Terminal Settings on the Host.....	7
IP Address Settings.....	7
Specifications.....	8
Packing List.....	8

Introduction

Thank you for purchasing our products. All products have been rigorously tested before leaving the factory, abide by the quality of commitment. This product is widely used in schools, gymnastics, square venues, parks, parking lots, railway stations, airports, villas, shopping malls and other places, which is the ideal choice for public address.

In order to facilitate your installation, commissioning and use of this product, please read the manual carefully before installation

Product Overview

The product is a network active horn speaker supporting network broadcast intercom system. It can support the international standard SIP protocol and accept broadcasts and calls from LAN and WAN. It can be quickly deployed to the place where you need with only one network cable, and is easy to install. With wide sound diffusion angle, it can realize super reproduction of voice and music.

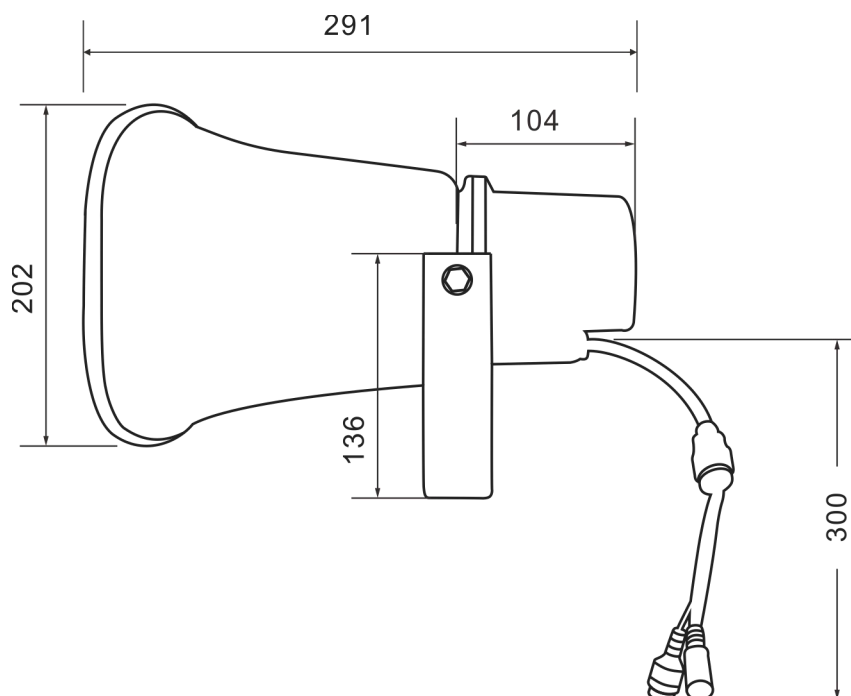
Product Features

- 10/100M self-adaptive, support DHCP/static IP, support LAN and WAN;
- Support SIP2.0 (RFC3261) and related RFC;
- Support narrowband encoding: G.711a/u; broadband encoding: G.722;
- Supported audio format: MP3, WAV, FLAC, etc.;
- Can play the background music, emergency paging and alarm signal from the host system;
- Adopt high-quality ABS plastic, high dynamic range speaker unit, more clear and brighter sound;
- Comply with IEC 268-5 Power Handling Capacity (PHC) standard; can work continuously for 100 hours at rated power; pass Simulated Acoustic Feedback Exposure (SAFE) test; can withstand twice the rated power in a short time, ensuring the high reliability of the horn speaker under extreme conditions, prolonging the service life, significantly reducing the chance of failure or performance degradation;
- Support PoE power supply;
- Equipped with mounting brackets for easy installation;
- All-weather design, applicable to indoors and outdoors in different occasions.

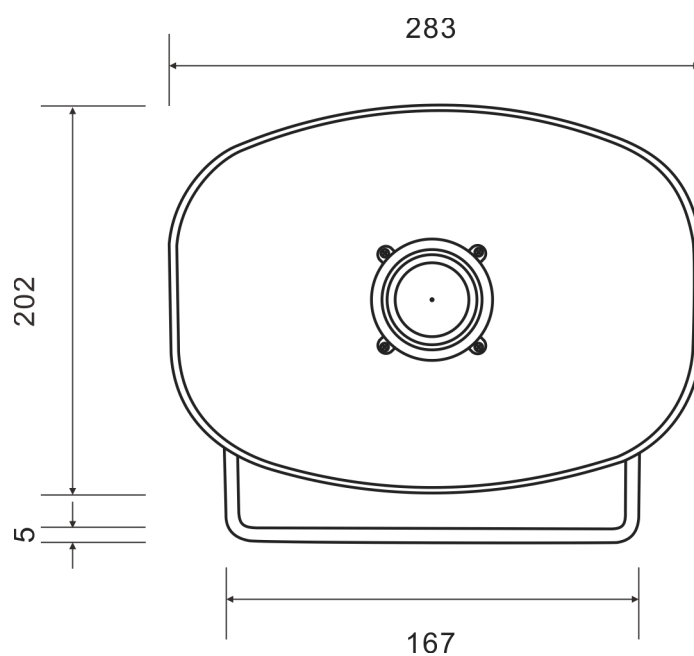
Product Information

Side View

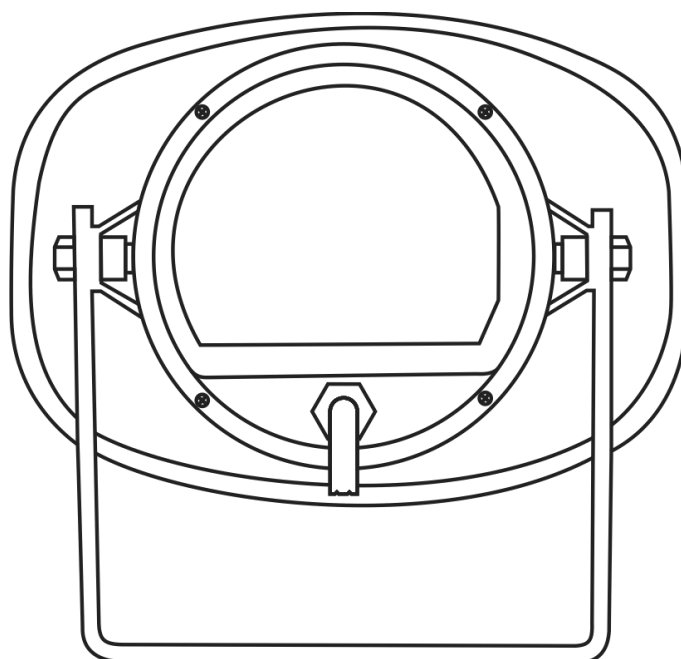
Unit: mm



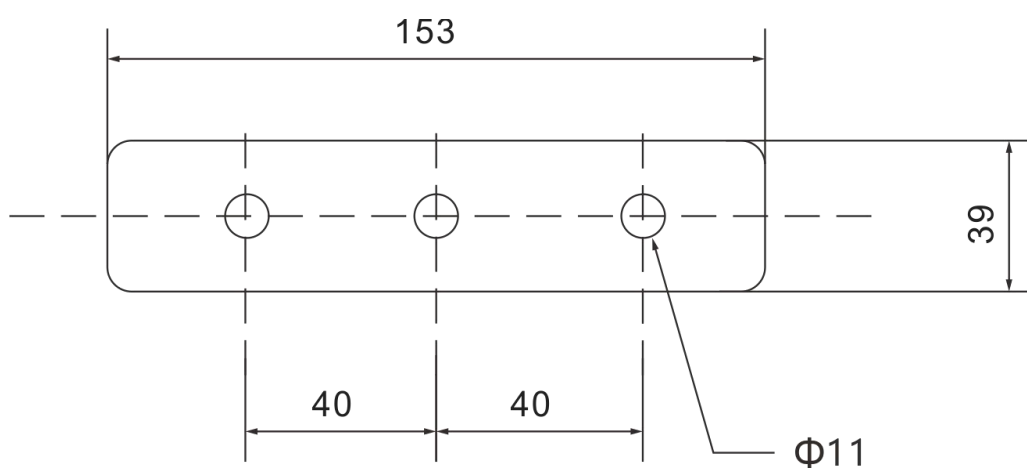
Front View



Rear View

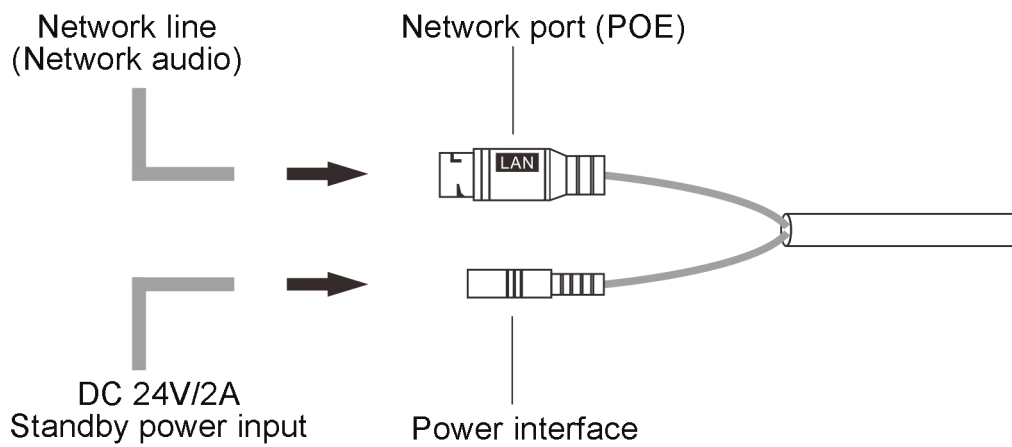


Mounting Bracket View



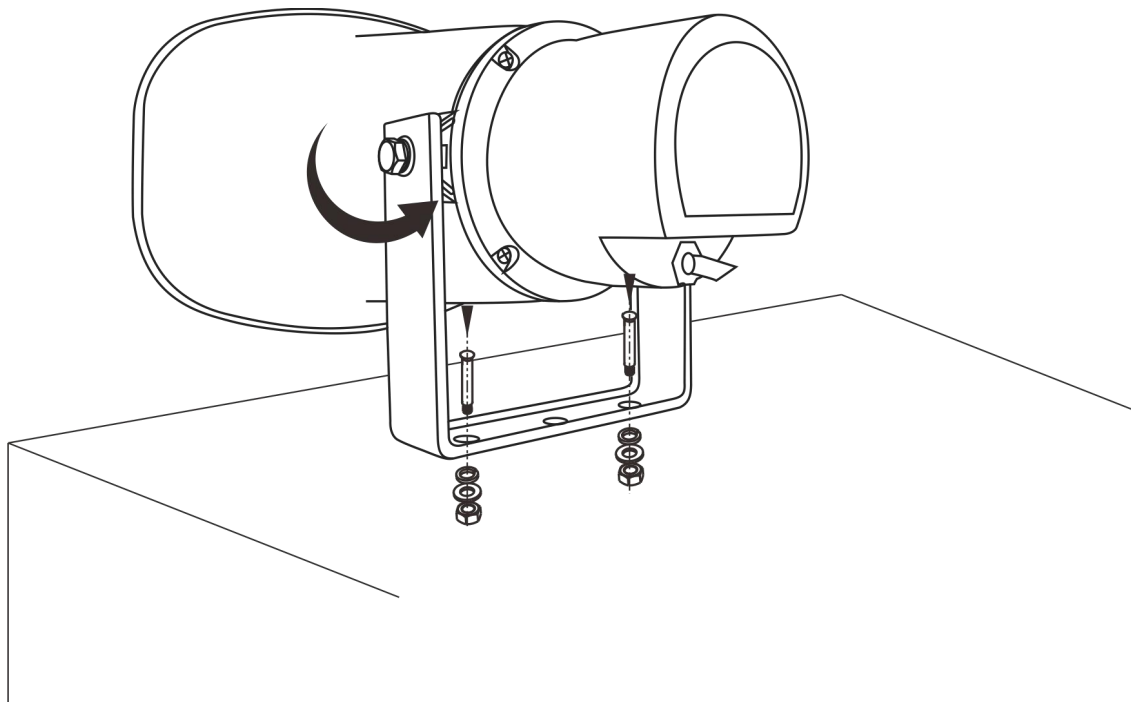
Connection and Installation

Connection Diagram

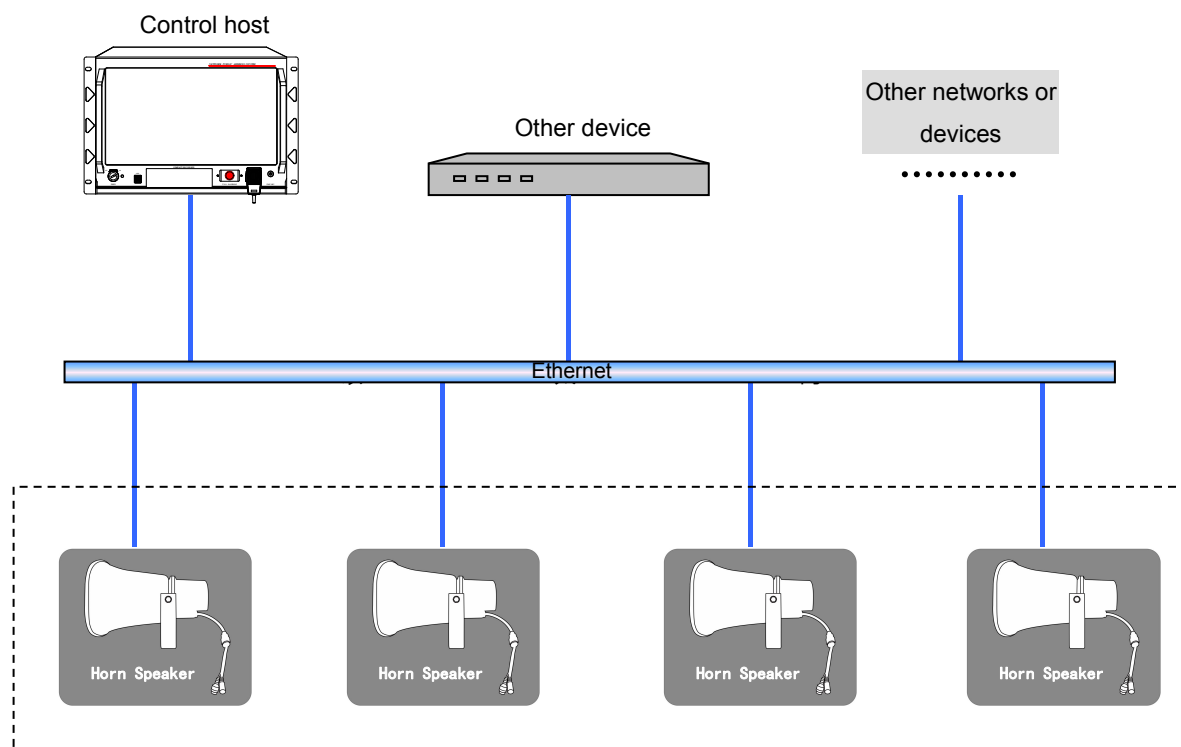


Installation Instruction

The bracket can be rotated at various angles. First tighten the nut to fix the bracket, and then secure the screws into the mounting holes and fix them on the wall.



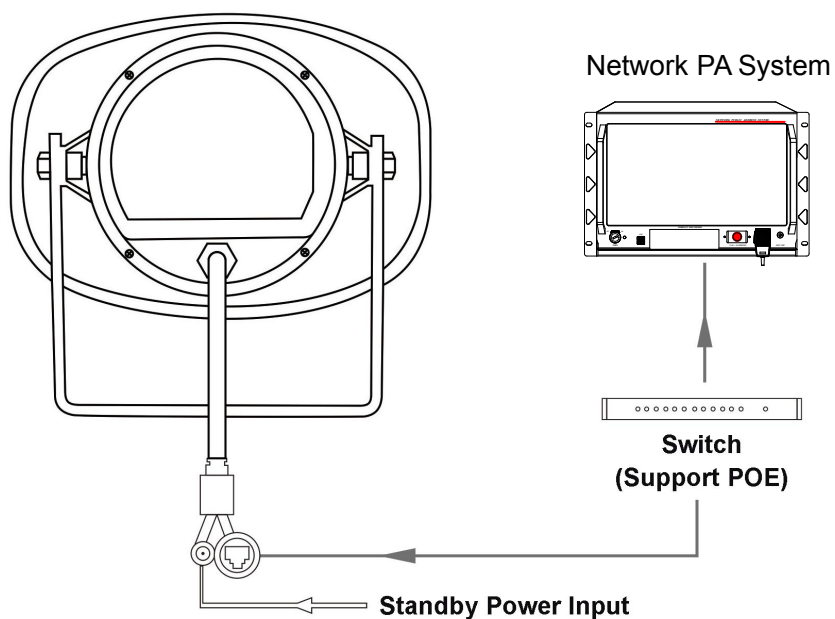
System Connection Diagram



Note:

- ① The diagram above only provides general instructions on application of the outdoor network horn speaker. Please refer to the User Manual of the Network Control Host for connection of the whole system.
- ② The diagram above is for reference only. Please refer to system connection diagram for detailed information.
- ③ The outdoor network horn speaker must be connected to the system via a network switch, on which corresponding address must be configured to realize connection to the host.

Connection Diagram



To ensure the normal operation of the entire system, a router must be mounted in the network where the device is connected.

Terminal Function Table

Item	Function and Symbol		Name
Network Port	Network port input		RJ45
Power Input	DC24V	+	Positive
		-	Negative

Operating Instructions on Terminal Settings on the Host

IP Address Settings

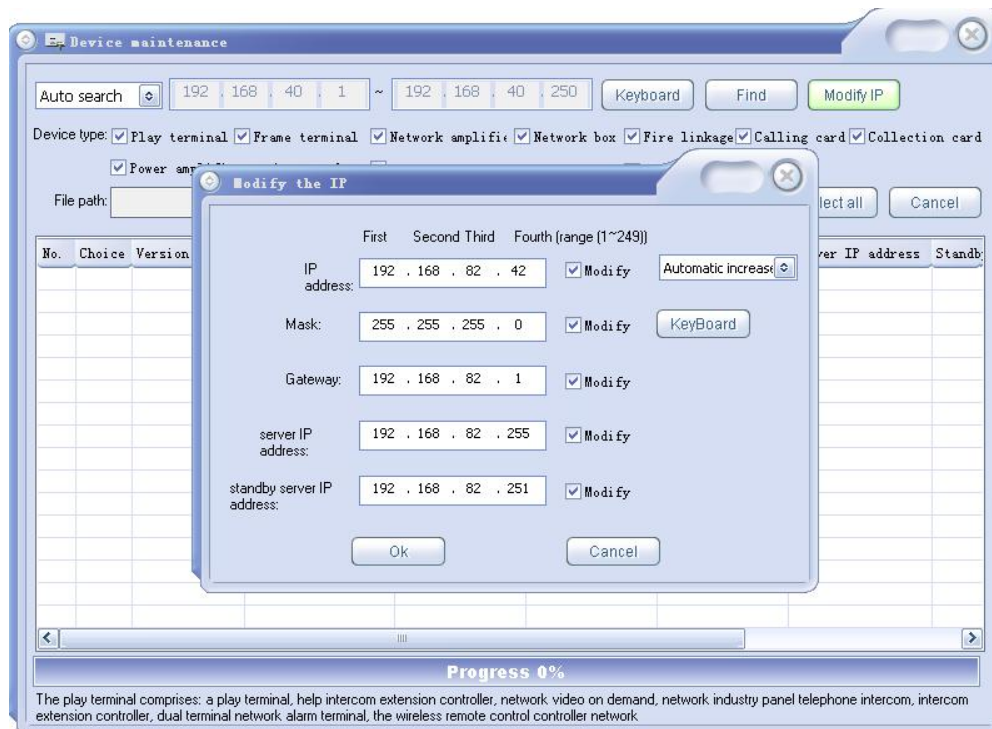
The speaker can be customized to modify network parameters. Please read this chapter carefully for custom settings of network parameters:

Method 1:

1. Modify the IP address of the host/computer, requiring that the IP address of the host/computer and the speaker must be on the same network segment. For example, when the IP address of the speaker is 192.168.40.5, the IP address of the host/computer should be configured to 192.168.40.XX (Note: The IP conflict can be not present in IP settings);
2. Enter the IP address of the speaker on the IE browser for modification after connecting the host/computer and the speaker (User name: admin, password: admin).

Method 2:

1. Access to the host software "Settings" -> "System maintenance" -> "Device maintenance".
2. Find the IP address marked on the speaker label, select and click "Modify IP".
3. As shown below, modify the parameters and click OK to see "Success" on the interface.



Specifications

Item		Parameters
Amplifier OUT	Rated Power (RMS)	15W 8Ω
	SNR	≥70dB
	Freq. Resp.	350Hz-10KHz
Speaker	Unit Driver	2.5"
	Sensitivity	105dB±2dB
	MAX. SPL.	117dB±2dB
	Freq. Resp.	350Hz-10KHz
	Distortion	≥1%
Power	Voltage	PoE+(IEEE 802.3at) / DC24V 2A (Standby)
Others	Network Interface	RJ45 (10/100M)
	Supported Protocol	DHCP, TCP/IP, UDP, ICMP, IGMP (multicast), 802.1x, HTTP, HTTPS, FTP, DNS, DDNS, RFC3261, RTP, RTSP, RTCP, UPnP.
	Power Interface	24V/2A
	Package Dimensions (L×H×D)	630x510x335mm(4 pcs)
	Machine Dimensions (L×H×D)	285x205x291mm
	Net Weight	1.9kg
	Gross Weight	10.8kg(4 pcs)

Packing List

No.	List	Quantity
1	Network Horn Speaker	1
2	User Manual	1
3	Warranty Card	1
4	Certificate	1

© | The technical data will be subject to changes without notices.