

HS-4404/HS-4504/HS-4604 20W/30W/40W Outdoor IP66 Waterproof Pendant Suspension Speaker

Product ID: HS-4404/HS-4504/HS-4604



Short Description

Rated power: 20W/30W/40W

Line input: 70V/100V/8Ω

4"/5.25"/6½" PP woofer + 1" silk tweeter

IP66 waterproof

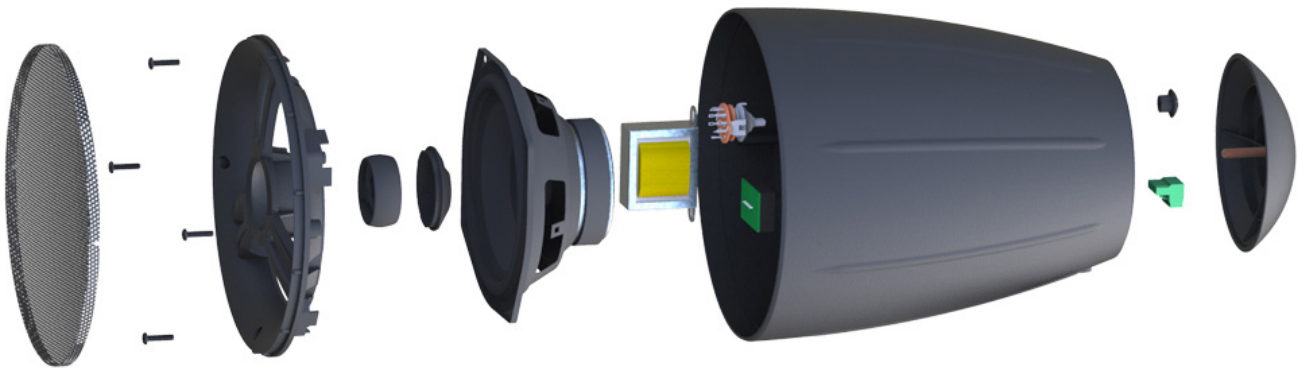
Description

Introducing our new designed IP66 waterproof pendant speakers:

HS-4404/HS-4504/HS-4604 series, the ultimate solution for your indoor & outdoor audio needs. Engineered to withstand the elements, these speakers are built tough with a durable construction that ensures reliable performance in any weather condition.

Featuring a powerful combination of a **4", 5.25" or 6.5" PP cone woofer driver** and a **1" silk dome tweeter speaker driver**, our speakers deliver exceptional sound quality with clear highs, rich midranges, and deep, impactful bass. Whether you're hosting a backyard barbecue, lounging by the pool, or enjoying a relaxing evening on the patio, these speakers will immerse you in a world of superior audio enjoyment.

High quality 2-way coaxial speaker driver
PP woofer + silk tweeter



Powder coated rust-resistant Aluminum grille
Flat design, embedded installation

Versatility is at the core of our design. Whether you prefer to suspend them from above, mount them onto a wall or other surfaces, or seamlessly integrate them into the ground or atop it, our speakers offer flexible installation options to suit your space and aesthetic preferences.

Ceiling suspend installtion (HS-4404/HS-4504/HS-4604)



On wall / surfaces Mount (WS-4404/WS-4504/WS-4604)



In or atop ground installtion (PS-4404/PS-4504/PS-4604)



With a commitment to excellence, we've ensured that our Indoor & Outdoor IP66 Waterproof Pendant Speakers not only deliver outstanding performance but also offer you an ultimate music experience. Experience the perfect blend of quality craftsmanship, durability, and affordability with our premium speakers.

Specification

Model	HS-4404	HS-4504	HS-4604
Rated Power	20W	30W	40W
Max Power	40W	60W	80W
Power Taps	2.5/5/10/20W/0/8?	3.7/7.5/15/30W/0/8?	5/10/20/40W/0/8?
Impedance	8?	8?	8?
Line Input	70V/100V/8?	70V/100V/8?	70V/100V/8?
LF Driver	4" PP	5.25" PP	6.5" PP
HF Driver	1" silk	1" silk	1" silk
Frequency Response	130~20KHz	100~20KHz	98~20KHz
Sensitivity	85±3dB	85±3dB	85±3dB
Magnet	70*32*15mm, Y30 Ferrite	80*32*15mm, Y30 Ferrite	90*36*17mm, Y30 Ferrite
Product Dimension	?151 x H185 mm	?175 x H233 mm	?210 x H305 mm

Product Gallery

