

L-406K/L-506K/L-606K 4"/5"/6" 8? Ceiling Speaker with ABS Cover

Product ID: L-406K/L-506K/L-606K



Short Description

Rated power: 20W/30W/40W

Line input: 8?

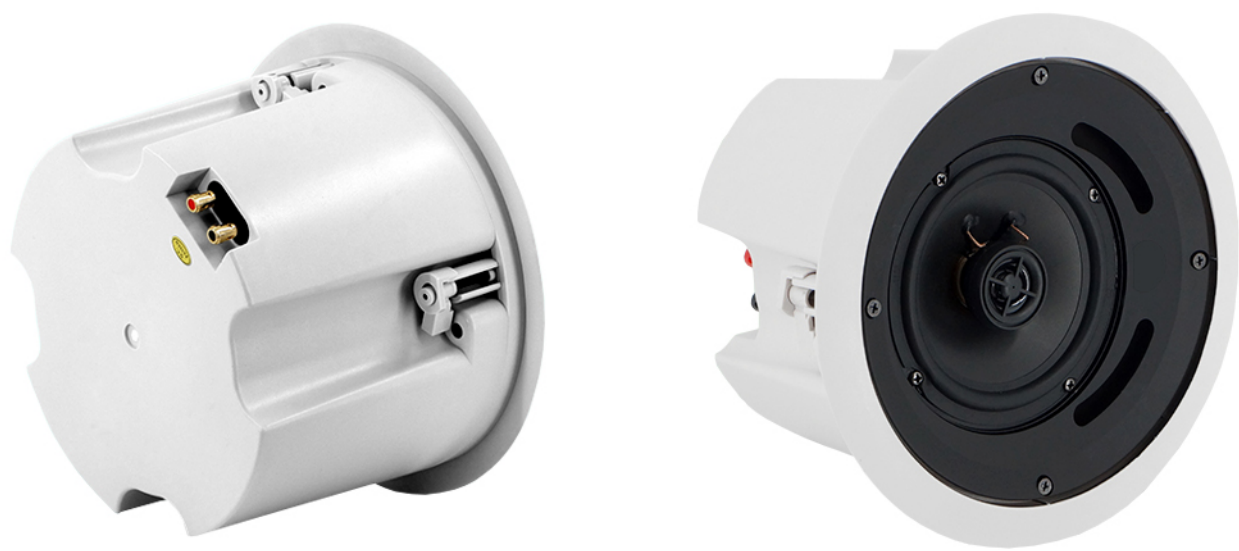
Speaker driver: 4" or 5" or 6" PP cone + 1" Mylar

Description

Enhance your public address systems and background music systems with these high-performance ceiling-mounted speakers.



Featuring a durable iron front grille and a high-strength ABS rear cover, these speakers ensure longevity and reliability.



Available in three sizes (4", 5", and 6") with a PP cone woofer and a 1" Mylar coaxial tweeter, they deliver exceptional audio clarity and music reproduction.

Ideal for indoor use, these CE-certified speakers are perfect for creating a superior audio experience in any environment.

Specification

Model	L-406K	L-506K	L-606K
Rated power	20W	30W	40W
Max power	40W	60W	80W
Impedance	8?		
Sensitivity (1m,1W)	87±3dB	88±3dB	90±3dB

Frequency response	90-20KHz	80-20KHz	70-20KHz
Woofer speaker driver	4" PP	5" PP	6" PP
Tweeter speaker driver	1" Mylar		
Product dimension (mm)	200x150	230x150	270x180
Hole for mounting (mm)	180	210	250
Frame material	ABS		
Grille material	Powder coated Iron mesh		
Color	White (RAL9016)		
Product net weight (Kg)	1.4	1.6	2.2
Gross weight	14Kg/8pcs	16Kg/8pcs	11Kg/4pcs
Packing dimension (cm)	54x50x42	59x55x43	64x34x49

Product Gallery



